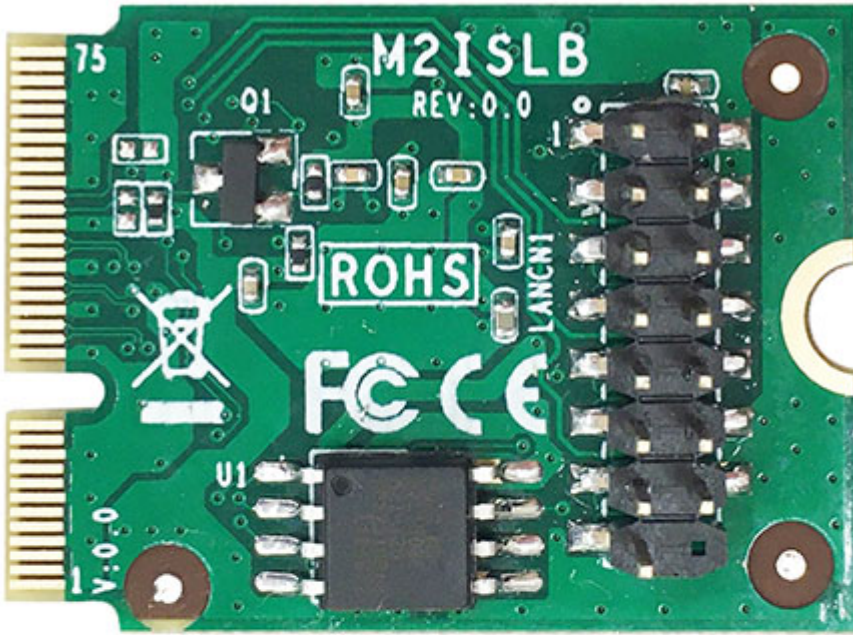


89.95 EUR
incl. 19% VAT, plus [shipping](#)



- M.2 E-key 2230 Daughter Card ■ support 1 * GbE expansion
- M.2 E-key 2230 interface
- Chipset: Intel i210IT GbE LAN controller
- Compliant with the 1Gb/s IEEE802.3,802.3u,802.3ab specifications
- Support Full duplex operation at 10/100/1000 Mb/s, Support Half duplex at 10/100 Mb/s
- Wake on LAN function (Depend on M/B 3.3V Standby Power)
- Support 1 * GbE
- Accessories 1: 25cm 16P to 16P cable * 1 pcs
- Accessories 2: GbE Bracket (J2ADSLANCNCR10-01G) * 1 set
- Size: 22.00 x 30.00 mm

Size	– 22.00 x 30.00mm
Chipset	– Intel i210IT GbE LAN controller
Features	– Compliant with the 1Gb/s IEEE802.3,802.3u,802.3ab specifications – Support Full duplex operation at 10/100/1000 Mb/s – Support Half duplex at 10/100 Mb/s – Wake on LAN function (Depend on M/B 3.3V Standby Power) – Support 1 * GbE

Interface	- M.2 E-key 2230
Accessories	- 25cm 16P to 16P cable * 1 pcs - GbE Bracket (J2ADSLANCNCR10-01G) * 1 set